

TRIPLE ACTION[®]

Small Adult Ankle Joint

(16mm Systems)

Product Data Sheet

Features

- Independent adjustment of:
 - Ankle alignment
 - Plantarflexion/dorsiflexion range of motion
 - Plantarflexion/dorsiflexion spring stiffness
- Independent ankle alignment range of $\pm 10^\circ$
- (4) high stiffness spring options included with booster spring models (Figure 1)
- Compatible with unilateral or bilateral orthotic designs

Indications

- Lower limb functional deficits as a result of:
 - Stroke
 - Cerebral palsy
 - Multiple sclerosis
 - Spina bifida
 - Spinal cord injury
 - Charcot-Marie-Tooth
 - Other neuromotor deficits

Contraindications

- Patient weight greater than 100 kg (220 lb)

Model 3B76 Component Selection

WEIGHT LIMITS (KG/LBS)	Unilateral	90 kg / 200 lb									
	Bilateral	100 kg / 220 lb									
GAIT PHASE WHERE ABNORMALITIES OCCUR	Booster Configuration	 No Booster		 Plantarflexion Resist Booster		 Dorsiflexion Resist Booster		 Plantarflexion & Dorsiflexion Resist Boosters			
	Early Stance Phase	NORMAL		ABNORMAL		NORMAL		ABNORMAL			
	Late Stance Phase			NORMAL		ABNORMAL					
	Leg	Either		Right	Left	Left	Right	Right	Left	Left	Right
	Side			Lateral	Medial	Lateral	Medial	Lateral	Medial	Lateral	Medial
	Order No.	3B76-A0*		3B76-A1*		3B76-A2*		3B76-A2*		3B76-A1*	
										3B76-A3	

*Only available direct from Becker Orthopedic in some countries


Fabrication Options


Thermoplastic

Unilateral* 
5mm (3/16") Polypropylene

Bilateral 
5mm (3/16") Polypropylene

Composite

Unilateral 
Wet Lamination like Becker BCO Shadow™, Max™ or PrePreg

Bilateral 
Wet Lamination like Becker BCO Lite™, Shadow™, Max™ or PrePreg

*Important: Thermoplastic unilateral AFOs require Camber Axis Triple Action® Companion Joint, or other free motion ankle joint



Product Data Sheet

Stirrup Options



Lateral Stirrup

*Models 3B76-LATR-1 &
3B76-LATL-1*



Medial Stirrup

*Models 3B76-MEDR-1 &
3B76-MEDL-1*



Y-Stirrup

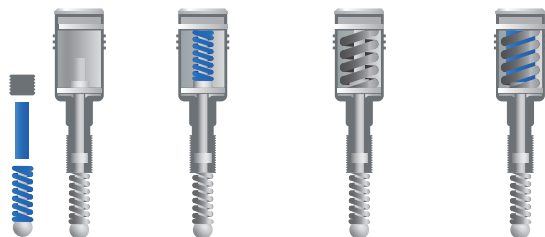
Model 3B76-Y-1



Universal Rivet Stirrup

Model 3B76-R-1

Spring Configurations



SPRING CONFIGURATION	1	2	3	4
Booster Required	No	Yes	Yes	Yes
Bottom Spring	Standard	Standard	Standard	Standard
Top Spring	None	Standard	High	High & Standard
Stiffness	X1 (low)	X2 (moderate)	X4 (high)	X5 (very high)
Max. ROM	10°	10°	10°	10°

*Figure 1

Accessories

Fabrication Tool Kit

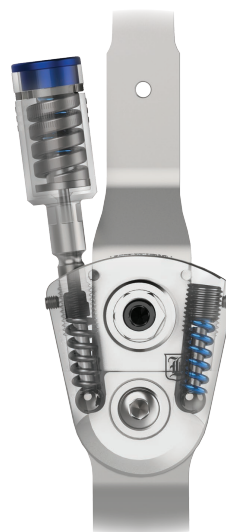
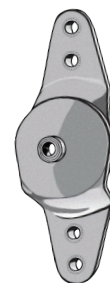
Model 3B00-FTK

The fabrication tool kit includes fabrication dummies, alignment axis, attachment hardware and wrenches.



Camber Axis Triple Action[®] Companion Joint

Model 751-ATA



*The Booster Spring Unit cannot be removed from the Triple Action component housing. Doing so will destroy the Booster and void the product warranty.

*Internal bottom spring under booster is covered with a lifetime warranty for defects in materials and workmanship.

